

Mineralogical Society of the District of Columbia



MINERAL MINUTES

The Mineral Minutes is the bulletin of The Mineralogical Society of the District of Columbia, Inc.

The purpose of this Society is to promote interest in mineralogy, geology, and related earth sciences and to encourage mineral collecting. An annual scholarship is awarded to a deserving student in the related field.

The Mineralogical Society of the District of Columbia is one of the founding Societies of the Eastern Federation of Mineralogical and Lapidary Societies.

Vol. 72, No. 7

Founded 1942

September 2013

September 4, 2013: Presentation by Erich Junger



Erich P. Junger, Ph.D

(Photo & bio from: <http://www.forensictv.net/forensictv-net/instructors/dr.-erich-junger.htm>)

Erich P. Junger, Ph.D., a 20-year veteran of the United States Navy, graduated magna cum laude from the George Washington University School of Medicine where he completed his studies as a health physicist and anatomist in 1985. Dr. Junger went on to complete his Master of Science degree in forensic science from the University of New Haven in 1990 and a Doctor of Philosophy degree in forensic science from the Union Institute and University in 1994.

TABLE OF CONTENTS

	<i>Page</i>
<i>The Prez Says</i>	2
<i>Labeling and Cataloging Rocks, Minerals, & Fossils</i>	3-12
<i>A Flask From the Past</i>	13-14
<i>Larimar</i>	14
<i>Remembering Jack Busch & Buck Keller</i>	15
<i>Dave & Leslie Nanney's Marvelous Mineral collection</i>	16
<i>Mineralogy, A Gateway Science?</i>	17-18
<i>Petrified Forest National Park</i>	19-21
<i>Linked-In and Federation News</i>	22
<i>Secretary's Report</i>	23
<i>2013 Officers & Board Members & Treasurer's Note</i>	24
<i>Speaker Flash Back, Upcoming Events & EFMLS Website News</i>	25-27
<i>Membership Application</i>	28

Dr. Junger has served as a deputy medical examiner and chief of the trace materials analysis laboratory for the Armed Forces Institute of Pathology in Washington, D.C. before retiring from the military. He then served as a detective for the Fauquier County Sheriff's Office in Virginia before joining the Prince William County Police Department in 2005 as a crime scene analyst in the identification bureau. He retired from the department in October, 2009.

Dr. Junger currently works as a forensic scientist for U.S. Customs and Border Protection. He is a charter member of the Virginia Homicide Investigators Association. He has been involved in several investigations in which soils and geologic materials have played key roles leading to the successful prosecution of criminal offenders.

THE PREZ SAYS...

By Stephen Johnson



(Photo: S. Sims)

By Stephen Johnson, MSDC President

I'm looking forward to seeing your collective faces on the 4th of September. I hope everyone has had a nice summer, but not nearly as much collecting for me as I'd have liked. So, given my lack of collecting lately, I started to try doing a better job of documenting my collection (see my article) and also using some of the things I learned from Bob Simonoff's lecture on mineral photography. It has been very useful to start going through all my specimens and getting them under control.

One of the things we need to decide at the meeting on the 4th is when we would like to make our annual pilgrimage to visit Dr. Lance Kearns down at JMU. I would prefer to get the group's opinion rather than deciding myself.

Over the next few months, I will work with Casper to start getting our Historical Newsletter Archives on the website. There is an incredible amount of information that that you will enjoy looking through. I particularly have enjoyed collecting information as various localities around DC have been discovered and developed. I was hoping to get a classmate/fellow geology major of mine, Dr. Ellen Stofan, to come give a talk this fall but I'm not sure that will work out – but that's a great thing for her. She was just named the Chief Scientist for NASA. Will keep engaging with Ellen to see when her schedule can support a talk from her...it will be well worth it for us.

That's about it. Keeping it short and looking forward to seeing everyone with the start of the Fall meetings.

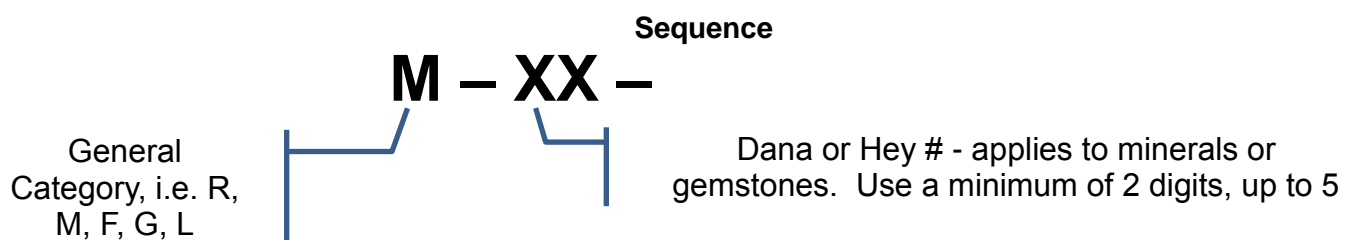
Labeling and Cataloging Rocks, Minerals, and Fossils

By Stephen Johnson

Catalog my collection? Why would I want to spend hours and hours writing stuff down and marking my rocks and minerals? Primarily, because it is always better to be organized than not. But today, with the digital tools that are available to collectors, the job can be so much easier. There are really three distinct parts to getting your collection organized: Marking, Documenting and Labeling. First is marking the stone with some sort of *identifying marker*. Second is documenting the specifics of the specimen in a record file – in days of old, it was done with catalog cards or record books but this has very little versatility. Today, this second part is principally handled through computer programs – either a spreadsheet, a database or one of the free catalog programs available on the internet (outlined below). Once you've gotten this far, the rest becomes fairly simple (says the guy with some computer skills...but really, it is so much easier once you have all the data input). The final part is using your documentation files to generate detailed records as well as specimen labels so that you have everything properly marked and also can quickly find it whenever you want.

Marking

The first step in the marking process is actually to decide what sort of numbering system you want to use to mark your specimens. The marker is nothing more than some sort of sequence number; 1, 2, 3, 4, 5, etc. There are many ways to do this. You can easily go with just a straight sequence 0001 to 9999...almost 10,000 specimens handled just with that numbering system alone. One article I came across mentioned possibly using MINDAT mineral numbers along with a sequence number as the marker. I couldn't seem to find a listing of those MINDAT mineral numbers and would hate to have to look it up every single time I was trying to generate a new number – just seems a little too tedious even though it would provide nicely detailed data. Instead, I chose to go with using either the higher level Dana or Hey number (I chose Hey with 32 Primary Categories) so that I can easily differentiate between carbonates and oxides or silicates and phosphates. Something else to consider and that I would additionally recommend, rather than just using the numbers (which works just fine) also include a code/letter at the beginning of each that tells what general category that the specimen falls in...I recommend R = Rock; M = Mineral; F = Fossil; G = Gemstone; L = Lapidary. This Letter and the Mineral Group Classification (when applicable), along with a sequence number will help you organize your data in a multitude of ways and adding this little detail allows a little more power in sorting and searching your database. Given this my generic number looks like something like this:



Once you've decided on how you're going to number your specimens, the next step is to actually do the marking. The specimen has the *marker* attached to it. There are many ways to do this. There are several methods for physically putting your markers on your collection:

- Be old school and put a spot of white paint on the specimen. Once it has dried, write the identifying marker on the rock with India Ink and a fine point. **(Not Recommended)**
- Write the number on an adhesive label and simply put it on the rock. **(Not Recommended)**

- Write the number on the rock with a permanent, fine point, felt tip marker (like a Sharpie). **(Recommended only for lab material or possible reference material)**
- Write the number on a piece of masking tape and place it to the specimen. **(Not Recommended – only because it isn't very permanent)**
- Write the number on a piece of paper, cut it out, and stick it to the rock with glue. To do this, put a drop on a flat spot, and push the label onto the drop. Glues tend to color with age, so be careful with this method. **(Not Recommended – unless you know your adhesive(s) well)**
- Write the number on a piece of paper, cut it out, and stick it to the rock with clear shellac or (poly)urethane. To do this, put a drop on a flat spot, and push the label onto the drop. If the surface is uneven, you may need to add a drop to the top of the label too. The clear finish is adsorbed thru the paper, sticks to the rock, and makes a permanent, waterproof, marker. **(Not Recommended)**
- Put a dot of latex on the specimen and then write the identifying marker on the latex. Latex is good because it can easily be cleaned from the specimen if necessary. Recommend using a fine point Sharpie to write the marker on the latex. **(Recommended)**
- And the final method I found is recommended by John Betts. Simply print out your labels on paper; cut them out and then attach them to your specimen with mineral tack. **(Recommended)**
- Remember – most of the time you do not want to do anything to permanently change the specimen

Documenting

Now comes the fun part! Typing/writing all the information you have about your specimens into your records. I'm first going to cover what I think is the minimum information you're going to need, but I have also included plenty of other details, that if known, will make your documentation much more useful. My first big assumption is that you will elect to use some sort of computer program. This is highly recommended – you can go to hand written records – but you will have so much more power to view and summarize your data as well as print out paper documentation that it doesn't make sense to place the effort into something other than a computer program and computer files. You can use MS Excel or Access, but there are two free programs out there that provide the functionality that almost all users will need. I will cover the data elements first and then some discussion of the two free programs. (Minerals by Carles Millan and SASK lithic MCC by Steven Ouderkirk)

Sequence Number	Data Item Name	Data Item Description	Required?
1	Catalog/Collection Number	Write or type a number on a label on the box or ideally on the specimen itself. On larger specimens I would recommend printing the locality information right on the mineral matrix. White-out and India ink is one way of doing this.	Yes
2	Type of Specimen	Is it a rock, mineral, fossil or a gem? Use a single letter code for this line: R, M, F or G.	Yes

Sequence Number	Data Item Name	Data Item Description	Required?
3	Acquisition Code	Use a code to show how you got the specimen. The following should cover all the possibilities: PS - Purchased at a show, PO - Purchased online, PA - Purchased at an auction, D - Donation, E - Exchange/Trade, F - Field Collected	Yes
4	Date Acquired	When did you come into possession of the specimen?	Yes
5	Date Collected	This may be the same date as "Date Acquired", but if you purchased it from someone or traded with someone who collected it or they know when it was collected, use that date here.	Yes
6	Source	From where or whom did you acquire the specimen?	Yes
7	Primary Species	What is the primary mineral's name?	Yes
8	Variety	Variety names such as Amazonite, the green variety of microcline feldspar or Kunzite, the pink variety of Spodumene	Yes
9	Keywords / Comments	In most cases you will leave this field empty. But it is useful to have space to describe a specimen with words such as twin or pseudomorph or inclusion. You can also use faceted, cabochon or carving as your keyword. If no keyword is necessary, use the space for in, on or with. These words will join the next line.	Yes
10	Country	Country of Origin	Yes
11	State	State, if known.	Yes
12	County	Write in county, district, or department.	Yes
13	Town	Town - Give the next specific locality.	Yes
14	Comment	Have a common area in the data collection sheet. If you know something about the history of the locality, any interesting information from collecting, and other trivia - i.e., state stone or fossil	

Sequence Number	Data Item Name	Data Item Description	Required?
15	Condition	What is the general condition of the specimen? Excellent, Very Good, Good, Fair, Poor, or Repaired?	
16	Crystal System Exhibited	What crystal system does the primary mineral exhibit? Remember, the same variety of a mineral can exhibit more than one crystal habit, i.e. Galena is primarily cubic, but can also exhibit octahedral.	
17	Cut	For faceted or cabochon stones - type of cut, i.e. emerald, round, cabochon, etc.	
18	Dimension	For the dimension use the format of (**x**x**x**).	
19	Dimension Units	Either Inches, Centimeters or Millimeters.	
20	General Locality	If there are other names this general location is known by.	
21	Hardness (Primary Species)	What is the primary mineral's hardness based on the Moh's scale?	
22	MINDAT Link (Primary Species)	URL for the primary species on the MINDAT homepage (mindat.org)	
23	Mine	Mine - Mine, deposit name or very specific locality.	
24	Mine specifics (if known)	If you know specifics about where the in the mine the specimen was collected, i.e. the 1000' level	
25	Mineral Classification Used	Dana or Hey?	
26	Picture(s)	The beauty of living in a digital age is that it is very easy to document your collection with a digital camera. If necessary you can put links in your file (Excel or a database program) to the folders and files with your pictures. Additionally, you can also edit the metadata of your pictures to include much of the information that you include here.	
27	Primary Crystal Color	What color is the primary mineral?	

Sequence Number	Data Item Name	Data Item Description	Required?
28	Primary Species Composition	What is the chemical composition for the primary mineral? This can easily be found at mindat.org	
29	Primary Species Family	Use either the Dana or Hey's system (see mindat.org for more information) - You can use either numbers (to several levels to get very precise) You can also have a second field that translates the numbering into the actual names of the classes.	
30	Quality	Museum? I'll leave this one to your imagination.	
31	Quantity	Number of pieces (if applicable). Most of the time this will be 1.	
32	Secondary Species 1	What is the next most abundant mineral's name?	
33	Secondary Species 1 Composition	What is the chemical composition for the mineral? This can easily be found at mindat.org	
34	Secondary Species 1 Family	Use either the Dana or Hey's system (see mindat.org for more information) - You can use either numbers (to several levels to get very precise) You can also have a second field that translates the numbering into the actual names of the classes.	
35	Secondary Species 2	What is the next most abundant mineral's name?	
36	Secondary Species 2 Composition	What is the chemical composition for the mineral? This can easily be found at mindat.org	
37	Secondary Species 2 Family	Use either the Dana or Hey's system (see mindat.org for more information) - You can use either numbers (to several levels to get very precise) You can also have a second field that translates the numbering into the actual names of the classes.	
38	Secondary Species 3	What is the next most abundant mineral's name?	

Sequence Number	Data Item Name	Data Item Description	Required?
39	Secondary Species 3 Composition	What is the chemical composition for the mineral? This can easily be found at mindat.org	
40	Secondary Species 3 Family	Use either the Dana or Hey's system (see mindat.org for more information) - You can use either numbers (to several levels to get very precise) You can also have a second field that translates the numbering into the actual names of the classes.	
41	Secondary Species 4	What is the next most abundant mineral's name?	
42	Secondary Species 4 Composition	What is the chemical composition for the mineral? This can easily be found at mindat.org	
43	Secondary Species 4 Family	Use either the Dana or Hey's system (see mindat.org for more information) - You can use either numbers (to several levels to get very precise) You can also have a second field that translates the numbering into the actual names of the classes.	
44	Secondary Species 5	What is the next most abundant mineral's name?	
45	Secondary Species 5 Composition	What is the chemical composition for the mineral? This can easily be found at mindat.org	
46	Secondary Species 5 Family	Use either the Dana or Hey's system (see mindat.org for more information) - You can use either numbers (to several levels to get very precise) You can also have a second field that translates the numbering into the actual names of the classes.	
47	Secondary Species 6	What is the next most abundant mineral's name?	
48	Secondary Species 6 Composition	What is the chemical composition for the mineral? This can easily be found at mindat.org	

Sequence Number	Data Item Name	Data Item Description	Required?
49	Secondary Species 6 Family	Use either the Dana or Hey's system (see mindat.org for more information) - You can use either numbers (to several levels to get very precise) You can also have a second field that translates the numbering into the actual names of the classes.	
50	Secondary Species 7	What is the next most abundant mineral's name?	
51	Secondary Species 7 Composition	What is the chemical composition for the mineral? This can easily be found at mindat.org	
52	Secondary Species 7 Family	Use either the Dana or Hey's system (see mindat.org for more information) - You can use either numbers (to several levels to get very precise) You can also have a second field that translates the numbering into the actual names of the classes.	
53	Size Group	What size is this specimen? Micromount? Thumbnail? Miniature? Small Cabinet? Cabinet? or Museum?	
54	Specimen Properties - Cleavage	What type of cleavage is exhibited by the primary species (if applicable)	
55	Specimen Properties - Fluorescent LW	What color does the primary species fluoresce under long wave UV?	
56	Specimen Properties - Fluorescent SW	What color does the primary species fluoresce under short wave UV?	
57	Specimen Properties - Fluorescent?	Does the specimen fluoresce? (Any wavelength) (Yes or No)	
58	Specimen Properties - Magnetic?	Is the specimen magnetic? (Yes or No)	
59	Specimen Properties - Phosphorescent?	Is the specimen phosphorescent? (Yes or No)	
60	Specimen Properties - Radioactive?	Is the specimen radioactive (Yes or No)	
61	Streak (Primary Species)	What color does the mineral exhibit when conducting a streak test?	

Sequence Number	Data Item Name	Data Item Description	Required?
62	Value	How much did you pay for the specimen? What was its value when you acquired it? If you won it as a door prize the specimen still has a value and you should estimate it. In case you find a world class specimen, leave 6 spaces (0000.00).	
63	Weight	Use this area for gems in carats.	
64	Weight Unit of Measurement	This could be pounds or Kilograms, but most likely will be ounces, grams or carats (for gemstones - remember 5 carats equals a gram)	
65	Which Collection	Start thinking about grading your collection. This field would be for whether the specimen is in the Display portion of your collection or in the Reference portion. Not everything can be on display, but it should all be organized and you should know where and how to find it.	

All of these can be used in a simple Excel file. The more skilled you are with using Excel, the more powerful you can make your file. Pull in data from other sources for your program to look up for data to make chemical formula entry simple, to check on the mineral name spelling. Use pivot tables to summarize your data in a variety of ways using the data elements you've put in the system. Print out reports and labels.

Now if you need something a little easier but with all the power, then consider either "Minerals" by Carles Millan (<http://carlesmillan.cat/min/>) or "SASK Lithic MCC" by Steven Ouderkirk (<http://mymineralsdb.com/drupal/>). They both have essentially the same functionality, but of the two I'd recommend SASK lithic MCC. It is a more complete product. Specifically it has substantial reference data already built (mineral names, compositions, crystal systems, etc.) into the program and is designed to address several types of collections: rocks, minerals, fossils and gems. It also deals with geologic time which is incredibly useful and important for fossils, but could also be used for rocks and minerals if it can be determined. Additionally it both imports and exports from Excel, so if you already have your file in some sort of digital catalog already, your work can easily be imported to this product and allow you not to lose a step on the work you've already done.

Do you have MSDC presentation ideas? Please contact MSDC VP, Rick Reiber with your suggestions.

File View Reports Settings Help

Specimen Collection Minerals


Identification
 Id 124 Mineral Calcite
 Variety >>
 Associations Diopase

Locality
 Nation Namibia State Oshikoto
 City Tsumeb County
 Place Tsumeb mine
 Detail >>

Physical Properties
 Size Class Museum Condition Very Good
 Size 26x15x8 cm Xtl Size up to 28 mm
 Color colorless-white Form matrix

Other Properties
 Fluorescence - bright

Acquisition
 Acquired By Purchase Status Display
 From Mineral show - Chicago
 Cost (\$US) 25.00 Acquired Jun 1976
 Value (\$US) 300.00 Valued Jun 2009
 Placement DC1

Pictures

 0510.JPG
 0511.JPG

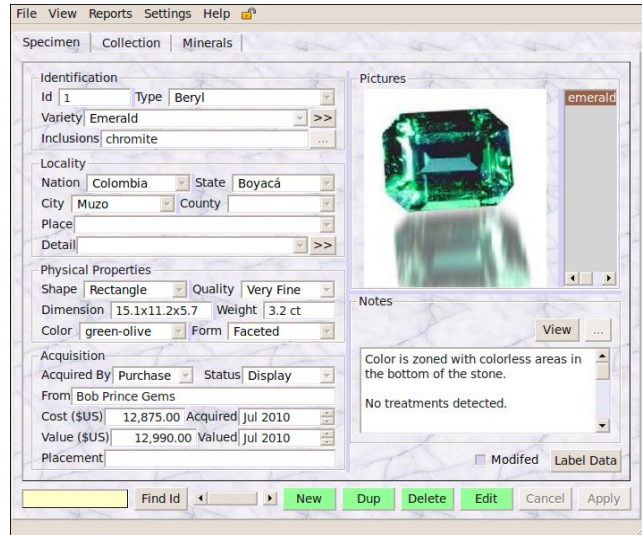
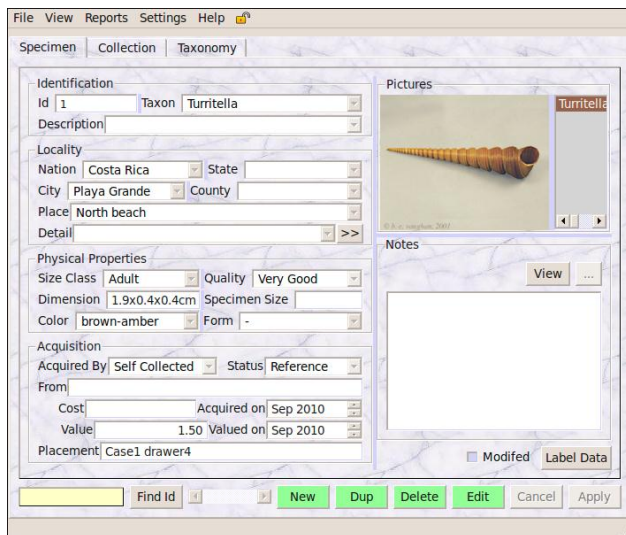
Notes
 View ...
 Bought at a mineral show (I think it was a Federation Show) in downtown Chicago (McCormic Place ?)
 Calcite crystals on both sides of specimen

Modified Label Data

Find Id New Dup Delete Edit Cancel Apply

Specifically, "SASC Lithic MCC" has a base table with 27 fields and allows for unlimited specimen photographs to record specimen related data. The mineral table has 10 fields to provide mineral property related data (populated with 4,300+ minerals). It also allows for extremely detailed locality information. One useful feather is that it allows you to maintain contacts where you can put your contacts' photographs to record dealer and collector contact information. And, finally, it allows you to Import and export your data in .CSV format. And finally it allows you to generate your reports and labels. And since you can export all of the key elements to Excel, you can easily develop your own detailed reports in addition to what is available with Lithic.

**S.C.R.I.B.E. – Special Congress Representing Involved
 Bulletin Editors – is not just for editors! Webmasters, authors,
 and former editors may also join. Please visit the S.C.R.I.B.E
 website for more information: <<http://scribe.rbnet.net>>**



But you can also use the program to catalog Fossils, Gems and Rocks

What to print out once you're done

I recommend building at least one notebook, possibly more depending on the size of the collection. This notebook should be in specimen number order and contain all the information you have on one page. Additionally I would recommend printing out some summary sheets that organize your collection in a few formats such as locality, country, mineral type, etc...anything that would allow you to quickly cross reference to your complete collection notebook(s). For those of you who maintain all the old labels you might have for your specimens, I would recommend simply taping them on the summary sheet for that specimen. If you ever give away or sell your specimen, a real treat for the person getting it would be to include the corresponding page for the mineral. And since we do live in the digital age, I would also think about finding somewhere to store your data "in the cloud" so that you can access when needed, especially if you have issues with your computer system in the future.

So, there you go! Decide how you want to catalog your collection and then just get started. As my old First Sergeant used to tell me – "Sir, do you know how you eat an elephant?...One bite at a time!" Just get started, that's half the battle, and then just apply yourself for 30-60 minutes each day and you'll be done before you know it. You'll feel like you've accomplished something and you'll have positive control of your collection. And after that, it is fairly simple maintenance. If you're interested reading other interesting articles about getting your collection organized, I recommend the following sites:

<http://www.ccfms.ca/Hobby/cataloguing.html>

<http://www.johnbetts-fineminerals.com/jhbnyc/articles/labels.htm>

<http://www.micromountersofnewengland.org/pdfs/Cataloging-Your-Collection-by-Joe-Mulvey.pdf>

<http://www.mindat.org/article.php/520/Data+Management+and+your+Mineral+Collection>

<http://tomaszewski.net/Kreigh/Minerals/Cataloging.shtml>

CHECK US OUT ON FACE BOOK!

Please help us keep friends and members interested and informed. Search for, or visit, "Mineralogical Society of the District of Columbia" to share your comments, links, and photos. (Administrators are: Steve Johnson, Betty Thompson, Bob Simonoff and Sheryl Sims.)

A FLASK FROM THE PAST!

By Tom Tucker



(photo: <http://www.christies.com/lotfinder/LotDetailsPrintable.aspx?intObjectID=4431330>.)

Last week on the Antiques Road Show, I happened to catch this item, a nice silver flask presented by Shepherd to a friend. Here's the appraiser's description:

APPRAISER: Well, you see Mr. Moore's name right here: It's William G. Moore, 1888. There's a long story behind this flask. It was one of a group of well-known pieces. This fellow here is Alex R. Shepherd-- you see his signature under his portrait. That's not William Moore, the ancestor of your friend, that's the donor of the flask. He gave the flask to Mr. Moore in 1888. Alex Shepherd was the governor of Washington, D.C., under U.S. Grant, and he was a very, very controversial, colorful figure. He was a plumbing contractor who was very close with the government officials, but by 1880, he had become so colorful, so notorious that he was basically drummed out of Washington and went to Mexico. And, in 1880, he decided that he would throw over politics and get into the silver business. So, if you look on the other side of this flask, you will see this fantastic engraving of a silver mine in a place called Chihuahua in Mexico in the high Sierra Madre mountains. It's just beautiful. Alex Shepherd went down there, made a fortune, and when he had enough money, he returned to the United States and had these flasks made at Gorham, and Gorham is a manufacturer in Providence, Rhode Island. And he gave them out to a lot of people who were in a position to help him regain his power and strength in the States. He actually gave a matching example to General Sheridan of Civil War fame, so I'm very interested in the ancestor of your friend who may have been in a position like that to help Governor Shepherd regain his stature in America. You see on the top of the flask, it's engraved with the name of the mine, which is Batopilas. The marks on it have a date letter for 1888, they have a factory number in a rectangle, which means "special order," and in fact we know the silver which went into this flask was supplied by Alex Shepherd himself. They're very, very collectible, and I think any silver collector would pay a good \$10,000 for this flask.

These seem to be popular items, as a web search found this note of a similar flask. Actually, it's the same flask and it was sold at Christie's in 2005 for over \$ 26,000.

See: <http://www.christies.com/lotfinder/LotDetailsPrintable.aspx?intObjectID=4431330>.

In September, 2007, a similar flask was estimated to bring between \$ 20,000 and \$ 30,000 at a local antiques auction house.

See: <http://www.washingtonian.com/blogs/capitalcomment/academia/pricey-silver-flask-a-relic-of-washingtons-past.php>

Each of those sales descriptions has a little information about Shepherd and his silver mine. A very fine article from the program for the 2007 New Mexico Mineral Symposium, describing the Batopilas district, history, mines, and minerals, may be found here: <http://geoinfo.nmt.edu/museum/minsymp/abstracts/view.cfm?aid=320>

The original Antiques Road Show appraisal of \$ 10,000 was done in 1998, and an update in 2012 gave a value of \$10,000 to \$ 15,000. There are several other web pages dealing with similar flasks from Shepherd, so you might try a search, "Alexander Shepherd, silver flask" for more information. If you happen to inherit one of these, hang on to your treasure.

LARIMAR

By Sheryl E. Sims



(Photo of Mineral: <http://www.vinow.com/blog/the-story-of-larimar-the-caribbean-gem-175/>;
photo of Brice Trinidad by Sarah Trinidad; earrings by S. Sims)

Had it not been for my little BFF ("Best Friend Forever"), Brice Trinidad, I would have never discovered the mineral, Larimar or blue pectolite. While on a cruise with his family, Brice, who is ever-vigilant when it comes to finding the perfect rock or mineral for me, spotted Larimar in a gift shop! Brice's mother got off easy by helping him select the above earrings for me. Initially, he suggested that she bring me one of large rocks shown above, which he told her I would just love!

After doing a little research, I learned that it is extremely rare and can only be found in the Dominican Republic. Larimar was first mined in 1916, but came to notice in 1974.

In 1974, Norman Rilling, a member of the U.S. Peace Corps, and Miguel Méndez, a Dominican found pieces of Larimar on the seashore. The word Larimar was created by Mendez, who combined his daughter's name Larissa with the Spanish word for sea, Mar.¹

Larimar is formed by hot gases that push crystallized minerals up though volcanic 'tubes'.² To mine the stone, miners identify the tubes and dig increasingly deeper into old volcanoes.³ Larimar is used most often to make jewelry but has also been used to make beads, decorative objects and even handles on cabinets.

I have to admit! Larimar makes lovely jewelry!

¹ <http://www.vinow.com/blog/the-story-of-larimar-the-caribbean-gem-175/>

² Ibid.

³ Ibid.



Remembering Jacob “Jack” Busch (MSDC)



(Photo: Betty Thompson)

Andy Thompson shared the sad news that he had received an email from Richard Busch, Jack’s son, that Jack passed away suddenly in early July. Andy said the following about Jack, which highlights just a few reasons why he will be greatly missed.

He was 94 and, as you would expect, was firing on all cylinders. Just a week before, he attended a council meeting and was giving administrators clear suggestions for how they could continue to make improvements for the residents of Asbury Methodist Village. That would be just like Jack, clear minded, insightful, good-willed and very practical with a view of what is in the best interest of all involved. He was like that in dealing with our MSDC issues as well.



Remembering Donald “Buck” Keller (NVMC)



(Photo: S. Sims)

We received more sad news from members of the NVMC that Donald “Buck” Keller (on the left) also passed away on August 6. He was a long-time NVMC member and cherished as a dear friend by Andy Dietz and Sue Marcus. He was also known as one of the club’s best mineral field collectors. Buck will long be remembered by his mineral club friends.

Robert Clemenzi and Barry Sperling Invited to See Dave and Leslie Nanney's Marvelous Mineral Collection

(Photos by Barry Sperling, 6-10-13)



OUR OLD GHOST MSDC WEBSITE NEEDS TO DISAPPEAR! CAN YOU HELP?

Long, long, ago, Betty Thompson set up a website for MSDC on her own (with zero expertise, according to her). Later, Casper Voogt very graciously set up a more flexible and attractive site that Betty can update (with some exceptions). However, the old website somehow continues to exist, and reportedly sometimes appears in searches. Can anyone tell Betty how to make the old website disappear? Many thanks! Please contact: bdthompson01@yahoo.com

Mineralogy, A Gateway Science?

Andy Thompson



Photo credit: Portrait of J. Robert Oppenheimer. 1931
<http://osulibrary.oregonstate.edu/specialcollections/coll/pauling/bond/people/oppenheimer.html>.



Photo credit: Portrait of Linus Pauling. 1930s.
<http://osulibrary.oregonstate.edu/specialcollections/coll/pauling>

Do you know the story of how the “Father of the Atomic Bomb”, Robert Oppenheimer, got his start in his spectacular scientific career?

In 1904, a very wealthy New York city couple lived in a spacious high rise apartment building along Riverside Drive, complete with servants and a chauffeur. From their eleventh floor perch, they looked out over the Hudson River and the lands beyond. Into this world, they brought a son, J. Robert Oppenheimer, who in many ways changed the destiny of the world’s most powerful nations.

Oddly enough, it was his interest in minerals that was the catalyst which set into motion a chain reaction whose impact continues to this day. The immediate trigger for his interest in minerals began when, at the age of five, he was visiting his grandfather in Germany. From him, Robert received a starter mineral collection, complete with descriptive identifications for each specimen. That’s all he needed to be off and running. His hunting grounds began with New York’s Central Park but it soon became national and international in scope.

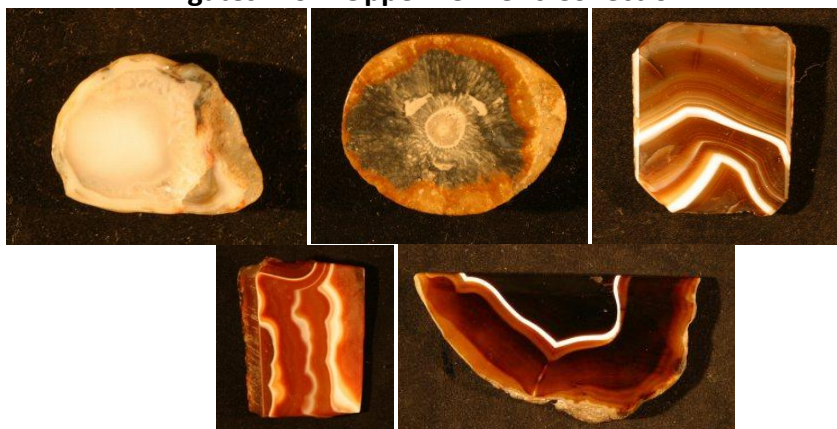
By the age of 11, he wrote a letter to the New York Mineralogical Club proposing that he give a lecture on his findings. Convinced they were dealing with an astute adult, they extended Robert an invitation to present. Imagine their surprise and delight when the then-12-year-old youth showed up and made an excellent presentation. They awarded him an honorary membership because his youthfulness failed to meet their minimum age requirement. When he turned 16, George Kunz, then President of the New York Mineralogical Club, proposed Robert for regular membership. The Club’s members, along with the curator of the Natural Museum of American History, together tutored young Robert and fed his natural interest in mineralogy as his knowledge and collection expanded.

Fast forward to the age of 21, and we see him graduating from Harvard with a BS degree in Chemistry. From there he went on to study theoretical physics specializing in subatomic nuclear particles. Given that the U.S. lagged behind Europe in physics, Robert went first to England and then to Germany where he was awarded a doctorate by the age of 23. When he returned to the United States, he began the long process of helping to bring the sad state of physics in America into the twentieth century, to catch up and then eventually triumph over its European counterparts.

J. Robert Oppenheimer spent his entire career teaching at two Universities, Berkeley and the California Institute of Technology (Cal Tech). The one exception was the four years during the early 1940s when he gathered the Manhattan Project's scientific team in Los Alamos, New Mexico, one of his favorite mineral collecting areas as a youth. There he designed and constructed the world's first atomic bomb, for which he became known as the Father of the Atomic Bomb. Referencing a John Dunne poem, he named the test site of the world's first nuclear explosion "Trinity," by which name it is still known today. Earlier, it was another of his favorite collecting sites.

Before the WWII years, he had developed a friendship with another Cal Tech science professor, Linus Pauling. That two-time Nobel Prize recipient, initially was given his first for Chemistry and later, another for his Peace activism. Pauling also was a life-long mineral collector, so it was a passion the two men shared. During the 1920s, the two were friendly colleagues although in later decades they were at considerable odds given their opposing stances over the atomic bomb. But to celebrate their earlier good times, later in life, "Oppie" gave Linus a large portion of his mineral collection. Pauling, in turn, shared it with his own son, with a son-in-law geologist, and with other mineral collectors. So the minerals which originally came from his grandfather's Germany at the beginning of the 20th century sparked a scientific curiosity in Robert that ultimately led to his creating a weapon of such mass destruction that it ended the Second World War which began with German aggression in Europe and ended with Japanese surrender in the Pacific.

Agates From Oppenheimer's Collection

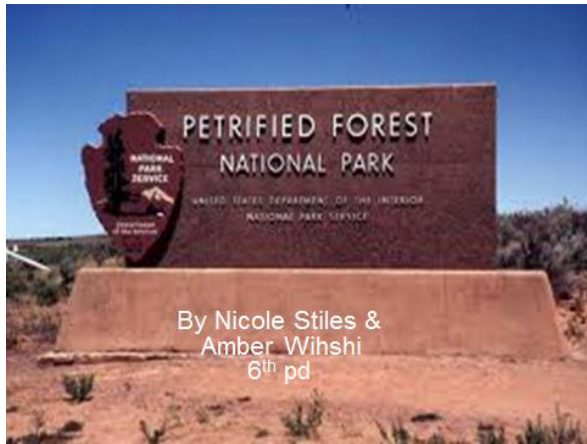


[All images by Anna Wilsey]

<http://paulingblog.wordpress.com/2009/11/19/the-oppenheimer-minerals/>

The experience of both these world-renowned scientists began with their interest in collecting minerals. They came from opposite ends of the economic spectrum, with Pauling born into a one-room apartment in Portland, Oregon and Oppenheimer much better off, as noted above. But for both, collecting and classifying minerals was a gateway first to chemistry and then to physics. For Pauling, his interests then extended to biological life sciences and included his crusade for the importance of vitamin C.

This gateway experience is similar to that of so many mineral club members who today report that they also began their life-long interest in minerals by their early childhood collecting of rocks and studying unusual stones and crystals. Perhaps because the collecting of rocks and minerals is so available to children, it is a perfect setting for opening boys and girls to broader scientific interests, whether in geology, chemistry, physics, the life sciences or extraterrestrial space. For many, childhood's collecting of minerals opens doors to productive careers as well as to becoming very interesting and focused adults.



By Nicole Stiles &
Amber Wihshi
6th pd

PETRIFIED FOREST NATIONAL PARK

Submitted by Sheryl E. Sims
Report Written by Amber Wihshi & Nicole Stiles

You can't imagine the joy I felt when my daughter, Amber, announced that she and her classmate, Nicole, were doing a PowerPoint presentation on the petrified forest for her GeoSystems class. Also, I steeled myself so that I wouldn't turn a cartwheel when I glanced down and noticed that she had selected one of my petrified wood specimens to show the class. Yes! *Show and Tell!* The excitement was so difficult to contain! This, I thought quietly to myself, was not only a dream come true, but *my* dream come true!

As some may remember, due to the late hour of our meeting, Amber slept through many a mineral club meeting. She even yawned by the dawn's early light while at the base of a quarry. Simply put, she didn't want to "rock with me" anymore. Having decided that it was safe for me to venture out to my mineral club related activities on my own, she vowed never to sit through another one of my rock and mineral meetings. Amber even went so far as to suggest that we were living in a quarry because everywhere she turned there was a rock or a mineral. "What's wrong with that?" I asked. "Isn't this the way rockhounds are supposed to live?" I continued. She just shook

September 2013

\\DC - 700504\000630 - 4664115 v1

her head and sighed in the manner that so many teenagers do.

Still, despite what she said, I now know that deep down inside of her lies the heart of a rockhound! I know that she has shared the good news that only mineral-related news can bring with others. And, most of all, I know that she's been listening! The proof is in this PowerPoint!

I told Amber that I wanted to share this with you. That caused her to gasp. "What if it's wrong?" "That's okay!" I said. "My club members are a wise and friendly group. They will be happy to clarify any inaccuracies and then you will know that you know what you know!" Dazed, but with no further comment, Amber emailed me her class project. I hope you enjoy it as much as I did! I just *had* to share!
September 2013



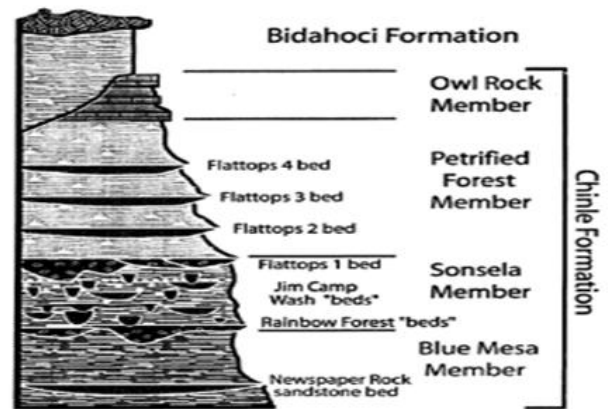
Mineral Minutes

Geologic History

- ❖ Many scientist believe that dinosaurs used to roam through this conifer filled forest 225 million years ago. Wood was being scattered throughout the forest, becoming petrified under certain circumstances.
- ❖ The majority of the park was formed due to basaltic lava and sedimentary rocks, which were laid down about 3-6 million years ago.
- ❖ Other deposits were created by sand and alluvium, which created an extensive layer on the mesas, valleys, and plateaus of the park.

(PETRIFICATION is the process where organic materials are converted into stone through the replacement of the original material and the filling of the original pore spaces with minerals.)

Geological Formations



Rock Types

- ❖ The most common rock types found here are: Sedimentary Rocks
 - Mudstones, sandstones, siltstones, shales, & conglomerate...
- ❖ Igneous Rocks
 - Basalt

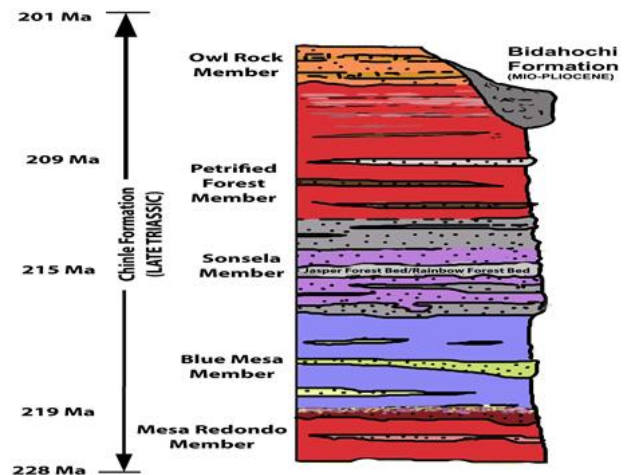
Common mineral types consist of: Quartz, Iron ores, Calcite, and Selenite

The Bidahochi formation

- ❖ The formation is located at the north end of the park.
- ❖ Composition consists of basaltic lava and sedimentary rock which were laid down about 3-6 million years ago. Lava flows into and onto sedimentary rock in a fresh water lake environment

Late Triassic Chinle formation

- ❖ The sedimentary rocks were laid down during the late Triassic period about 250 million years ago
- ❖ Chinle consists mostly of clay soils. The formation is divided into four members: Blue Mesa, Sonsela, Petrified Forest, and Owl Rock Members

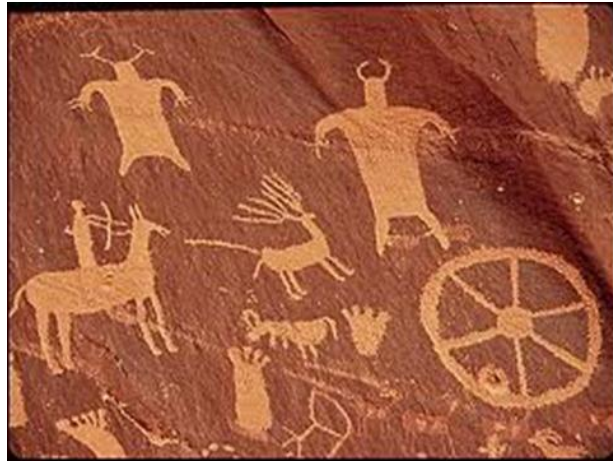


September 2013

Mineral Minutes

Climate

- ❖ During the summer, temperatures range from 90 °F to 100 °F. Due to clear skies, the park is able to cool rapidly at night, with a low of 40 °F.
- ❖ Winter temps. range from 48 °F to lows with an average of 21 °F, with 60 mph winds.
- ❖ Heavy rains fall from July through September, with August being the wettest month. Half of the park's annual average precipitation falls during violent, short thunderstorms.
- ❖ Due to an elevation more than 5,000 feet, the Petrified Forest occasionally has light snow fall from October-March

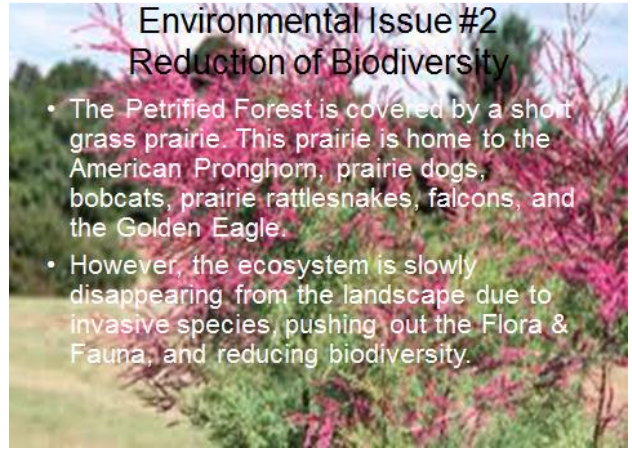


Environmental Issue #1 Invasive Species

- ❖ The Forest is facing rapid spreading of nonnative species, such as Russian thistles & Tamarisk.
- ❖ This is a problem because they don't have natural enemies, causing them to out-compete & displace native species.
(Most invasive species are introduced by human activity)

Environmental Issue #2 Reduction of Biodiversity

- The Petrified Forest is covered by a short grass prairie. This prairie is home to the American Pronghorn, prairie dogs, bobcats, prairie rattlesnakes, falcons, and the Golden Eagle.
- However, the ecosystem is slowly disappearing from the landscape due to invasive species, pushing out the Flora & Fauna, and reducing biodiversity.



Citations

- ❖ "Petrified Forest." *Google Images*. N.p., n.d. Web. 3 June 2013.
- ❖ "The Petrified Forest." *National Park Service*. U.S. Department of the Interior, n.d. Web. 2 June 2013.
- ❖ "Petrified Forest National Park." *TLO Discovery Communications*, 2006. Web. 2 June 2013.
- ❖ "Petrified Forest National Park Geology." *National Park Service*. U.S. Department of the Interior, 4 Jan. 2005. Web. 2 June 2013.
- ❖ "Solar Eclipse Viewing Party To Be Hosted At Petrified Forest National Park." *Arizona Journal*. Arizona Journal, 16 May 2012. Web. 2 June 2013.

Editor's Note: THANK YOU for making the "Mineral Minutes" great! I appreciate your contributions and look forward to receiving more of your articles, photos, and club-related information. New authors are encouraged to support our newsletter along with our other faithful contributing authors. Help make the Mineral Minutes newsletter a "must read!"

Linked-in:

- <http://animal.discovery.com/tv-shows/ice-cold-gold/video>
- <http://www.mineralcalendar.com/php/calendar.php>
- EFMLS Events: <http://www.amfed.org/efmls/calendar.htm>
- <http://geogallery.si.edu/index.php/en/gems/>

MEET, GREET, & EAT!



Join MSDC club members for dinner at Pier 7 at 6:00 p.m. before each meeting.

FEDERATION NEWS

AFMS Officers for 2012-13

President - Don Monroe (SFMS) President-elect - Richard Jaeger (RMFMS)
1st Regional Vice President – Marion Roberts (CFMS)
2nd Regional Vice President – Matt Charsky (EFMLS)
3rd Regional Vice President – Ann James (SCFMS)
4th Regional Vice President – Sandy Fuller (MWF)
5th Regional Vice President – Doug True (NFMS)
Treasurer – Pat LaRue (2 year term)

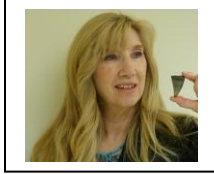
The position of Secretary was not up for election this year.
Anne Cook will complete the 2nd year of her 2 year term.

EFMLS Officers for 2012 - 2013

President - Cheryl Neary, ciervo.neary@gmail.com
1st VP - Hazel Remaley, northridge5@verizon.net
2nd VP - Merrill Dickinson, medsearchnorth@comcast.net
Secretary, Gerry Cox, gerryannec@verizon.net
Treasurer, Lou Budell, labudell@windstream.net
Asst. Treasurer, Michael Patterson, Michael.Patterson@pgparks.com
Editor, Carolyn Weinberger, PO Box 302, cscrystals2@gmail.com

Plan Ahead! 2013 AFMS Convention & Show

Sept. 18-22, 2013, Jacksonville, FL
Sept. 18 - Uniform Rules
Sept. 19 - AFMS Annual Meeting and Scholarship Foundation Meeting
Sept. 20-22 – Show, Sept. 21 - Awards Banquet
Sept. 22 - Breakfast with Editors and Webmasters



Secretary's Report

By Patricia Flavin

Meeting Place: Cathy Kerby Room-CE 340, The Smithsonian National Museum of Natural History

Meeting Date: June 5, 2013 **Attendees:** 22

Recognition of past presidents: Club President, Steve Johnson, presided and recognized Andy Thompson and Cynthia Payne.

Treasurer's Report: Rebecca Siegal accounted for the club's funds.

Old business: Minutes approved: May minutes were approved.

Steve Johnson said new MSDC Club Identification Membership Cards will be available soon, to provide members with documentation when joining field trips and another club's events. Michael A. Wise, Ph. D., club member and geologist in the Division of Mineralogy, for The Smithsonian National Museum of Natural History, has been collecting data on Pegmatites, worldwide, and has recently presented a theory that was welcomed. He has been asked to publish his findings.

New Business: Matt Charsky, briefed us on his visit to the recent 63rd Eastern Federation Mineralogical and Lapidary Societies, Inc. (EFMLS) show held in Long Island, NY. He reported that literary awards were announced for club members who had contributed the best articles, etc. to their club's newsletter during 2012. These articles were judged against all other competing articles in the Eastern Federation clubs' newsletters. Our club members scored high this year receiving at least 6 awards. Matt presented MSDC Past Presidents Andy Thompson and Tom Tucker with awards for articles they wrote for the MSDC newsletter. Our MSDC Newsletter Editor, Sheryl Sims, received (4) awards: 1st Place for "New Editor", 1st Place-"Original Poem", 2nd Place- "Original Educational/Technical Article"-entitled *Shake Rattle & Roll*, and "Honorable Mention" for an article-*A Future Rockhound*. Honorable Mention awards went to: Andy Thompson for "Why Would Anyone Build with Travertine, Porous Rock As It Is?"; Erich Grundel for "Scientific Crystallography Celebrates 400th Anniversary", "Minerals in the News (Part 1)" and "Giants Take Baby Steps"; and Tom Tucker for "My Meteorite Story". Way to go everyone! We are so proud of your contributions.

Cares and Concerns: Susan Fisher. Our best wishes for a quick recovery.

Business Meeting Adjourned

Program Speaker: Michael J. Pabst, "Colorful Rare Earth Minerals". The location, application and financial investment of these significant micro minerals were discussed through Mr. Pabst's own exquisite photos and those of other professional photographers.

Announcements: Please check out our website and Facebook page.

Refreshments: Thank You!

Motion to Adjourn to the Program

The Club meeting concluded at 9:45 pm.

2013 Officers and Board Members



(left to right: Steve Johnson, Rick Reiber, Patricia Flavin, Rebecca Siegal, Dave Hennessey, Dave Nanney, Andy Thompson, & Sheryl Sims)
(photos provided by B. Thompson, A. Cameron Siegal, & S. Sims)

Officers & Board Members Contact Information

President: Steve Johnson - StevikJ@gmail.com; **Vice President:** Rick Reiber - Mathfun34@yahoo.com
Secretary: Patricia Flavin - pattiflavin@gmail.com; **Treasurer:** Rebecca Siegal - dcm mineralclub@gmail.com
Directors: Dave Hennessey - dhennessey@spa.com; Dave Nanney - DNanney@cox.net;
Andy Thompson - thompson01@starpower.net; **Editor:** Sheryl Sims - sesims4@cox.net

Thank You to all who donated door prizes last year, provided refreshments, took photos, brought guests, shared mineral news, and made our club a great one by attending our meetings!

THANK YOU for your wonderful articles and photos! Your contributions make our club bulletin a great read. Please continue to support our club bulletin by sending me your mineral-related news, articles, photos and/or links. The *Mineral Minutes* newsletter deadline is the 15th of each month. You may email your submissions to me at <sesims4@cox.net>. Again, thank you! (Note: The Editor reserves the right to edit all submissions as necessary.)

THANK YOU to Andy Thompson for proofreading the *Mineral Minutes*!

Treasurer's Note:

Treasurer, Rebecca Siegal



2013 Dues! \$20 for single memberships. \$25 for family memberships. Why not invite your friends and family to join MSDC?

Please send all treasurer-related emails to:
dcm mineralclub@gmail.com

MORE REFRESHMENTS, PLEASE! If you are able to bring refreshments to our monthly meetings, please do so. Your contribution will be greatly appreciated! We are also looking for a volunteer or two to coordinate refreshments for our meetings. Please let Steve Johnson or a board member know if you can assist.

WELCOME! WELCOME! WELCOME! Guests are always welcome to attend MSDC meetings. Please continue to invite your friends!



Speaker Flash Back

(Microsoft Clipart)

- January 2013: Michael A. Wise, Ph. D, geologist in the Division of Mineralogy, for The Smithsonian National Museum of Natural History, gave a very interesting presentation on cathodoluminescence.
- February 2013: Cathleen Brown, Museum Specialist Rocks and Ores Division, for The Smithsonian National Museum of Natural History, addressed MSDC members on the topic of Pegmatites: What they are and where to find them.
- March 2013: Meeting cancelled due to inclement weather.
- April 2013: Robert Simonoff – “Mineral Photography”
- May 2013: Casper Voogt – “Mineral Trip to Morocco”
- June 2013: Michael J. Pabst – “Colorful Rare Earth Minerals”
- July-August 2013: No meetings held.

Upcoming Events

Sept. 14-15: 48th Annual Gem & Mineral Show Zembo Shrine

Oct. 26: 29th Annual South Penn Fall Rock Swap Sponsored by: The Central Pennsylvania and Franklin County Rock and Mineral Clubs. South Mountain Fairground.

NEWS FROM OUR EFMLS WEBSITE:

[Visit a Show in Your Area](#)

If you are an EFMLS member club and would like to have your show or swap listed in the calendar, please contact me at lapidry@aol.com.

September 2013

7-8: New Milford, CT - GEM, JEWELRY & MINERAL SHOW sponsored by The Danbury Mineralogical Society, Saturday September 7, 2012 10 a.m. to 5:00 p.m., Sunday September 8, 2012 10 a.m. to 4:00 p.m. New Milford High School Cafeteria, Route 7, New Milford, CT. Directions: From Rte. 84 Take Exit 7 (Rte. 7 north through Brookfield. School is about 1 mile north of New Milford town line. Take left onto Larson Road at traffic light. Take left into school, and then a quick right to back of building. Plenty of free parking. Handicapped accessible. Admission: \$5.00 adults \$4.00 seniors and full time-students with ID. Free admission for kids 12 and under and scouts in uniform. HOURLY DOOR PRIZES *GRAND PRIZE * 50 CENT GRAB BAGS *CLUB INFORMATION * SPECIMEN IDENTIFICATION * DISPLAYS. For more information call (845) 279-6415

2013 AFMS/SFMS

Convention and Show

Heavens and Earth

September 18th - 22nd, 2013

Convention Location

Marriott Jacksonville

4670 Salisbury Road

Jacksonville, FL 32256

(904) 296-2222

Show Location: Morocco Temple, 3800 St Johns Bluff Road South

Jacksonville, FL 32225

1-22: Poughkeepsie, NY - Mid-Hudson Valley Gem & Mineral Society's 44th Annual Gem, Mineral, Fossil Show & Sale, Gold's Gym & Family Sport's Complex, 258 Titusville Road, Poughkeepsie, NY, Sat. 10-5 Sun. 10-4. Adults - \$5.00; Seniors- \$4.00; Students-\$2.00 Children Under 12 w/Adult – Free. Show Theme-“Exploring the Rockhound Hobby”. 6 Free Rocks for Kids; 30 Dealers of Minerals, Fossils, Meteorites, Gemstones, Jewelry, Beads, Tools& Books; Mineral Displays by Vassar College Geology Museum, New York State Institute of Mineralogy, Pawling, NY Gunnison Mineral Museum and Club Members; Fluorescent Mineral Display Booth; Lapidary Demonstrations. 2nd Annual Mineral Photography Show Info. Carolyn Reynard, 845-471-1224, or sunstone33@verizon.net MHVG&MS web site: www.mhvgms.org.

28-29: West Friendship, MD - 49th Annual Atlantic Coast Gem, Mineral & Jewelry Show hosted by the Gem Cutters Guild of Baltimore. Howard County Fairgrounds, West Friendship, MD.

October 2013

26: Fairless Hills, PA - The Rock and Mineral Club of Lower Bucks County, PA presents our Annual “ULTRAVIOLATION” an all Fluorescent Mineral Show, at the First United Methodist Church, 840 Trenton Road, Fairless Hills, PA., 9:00 AM – 5:00 PM, Cost \$2.00 Donation, Children 12 years old and younger FREE, Information contact Chuck O'Loughlin, 130 Maple Terrace, Merchantville, NJ 08109, Phone: 856-663-1383, Email: ultraviolation@yahoo.com

26-27: Rochester, NY - 44th Annual Rochester Gem, Mineral, Jewelry & Fossil Show sponsored by the Rochester Lapidary Society. Saturday, October 26, 2013 — 10 a.m. to 6 p.m., Sunday, October 27, 2013 — 10 a.m. to 5 p.m. Main Street Armory, 900 East Main Street, Rochester, NY 14605. Adult - \$6, Children under 12 free with an adult., 2-day pass only \$9. Students receive half price admission with valid school issued ID. For more information: <http://www.rochesterlapidary.org/show.htm>. E-mail: lapidry@aol.com

November 2013

2-3: Exton, PA - 44th Annual Gemarama 2013: Shades of Red” sponsored by the Tuscarora Lapidary Society. The School at Church Farm, Business Rte. 30, 1 / 2 mile west of Frazer Rte. 30 exit off Rte. 202, Exton, PA.

March 2014

22-23: Sayre, PA - Che-Hanna Rock & Mineral Club Show will be held on March 22 (9-5) and March 23 (10-4) . Held in the Athens Twp. Vol. Fire Hall, Sayre, PA Contact 570-928-9238 uvbob@epix.net

ADVERTISING YOUR SHOW

from Carolyn Weinberger, Editor, EFMLS Newsletter
From EFMLS Newsletter, 10/04

In recent months I've had several inquiries from Eastern Federation clubs asking for a list of hobby related publications that have a calendar of events that can be used to publicize club shows and swaps.

MINERAL MINUTES

Here's the list which I have. Remember, most of these publications have a 3 - 4 month "lead time" so you'll have to get your information in to them early enough to meet their deadline.

<p><u>EFMLS News</u> Send to: Matt Charsky 2430 N Glebe Rd Arlington, VA 22207 Charsky.Matthew@epa.gov</p>	<p><u>Mineral News</u> Send to: The Editor, Mineral News PO Box 2088 Peekskill, NY 10566-2088</p>
<p><u>EFMLS Website</u> Dan Imel lapidry@aol.com</p>	<p><u>Rock & Gem</u> Send to: Rock & Gem Show Dates 290 Maple Ct; Suite 232 Ventura, CA. editor@rockngem.com></p>
<p><u>Rocks & Minerals</u> Send to: Coming Events, Rocks & Minerals 1319 Eighteenth St NW Washington, DC 20036-1802 rm@heldref.org</p>	<p>Include date, place, sponsoring club, name and address of show chair or contact for info. Some also allow space for listing of speakers, admission and show times.</p>

Workshop Opportunities - Eastern Federation

The EFMLS fall workshop will also be held at the Wildacres Retreat just before the AFMS Convention in Jacksonville. Each workshop features instruction in a variety of classes plus the added bonus of having six excellent talks by a "Speaker-in-Residence". For the September 2- 9 session, the featured speakers will be Quintin and Willow Wight, well known mineral and gem experts. Cost for the one week session is \$380 per person (room, board and instruction). Classes being offered at the fall session include Beading, Cabochon Cutting, Cold Connections, Anodizing Reactive Metals, Faceting, Intarsia, Scrimshaw, Silversmithing, and Stained Glass. **To learn more about the Wildacres Retreat, the classes and speakers, visit the EFMLS web site. <www.amfed.org/efmls> and click on the Wildacres tab.** You'll find class descriptions and a registration form as well.



(photo by S. Sims)

MSDC RAFFLE!

Thank you for your mineral donations. They will be used as door prizes.

We have your winning ticket in the bag!

Pre-Meeting Dinner: Join us for dinner at the Pier 7 Restaurant at 6:00 PM for dinner before the club meeting. 650 Water St SW, (at S L St), Washington, DC 20024, (202) 554-2500, www.pier7restaurant.com/Menu.
Please call Susan Fisher at 703-830-9733 to make a reservation if you wish to attend.

Visitors are always welcome at our monthly meetings and dinners!
MEMBERSHIP APPLICATION OR RENEWAL
THE MINERALOGICAL SOCIETY OF THE DISTRICT OF COLUMBIA (MSDC)

- Family ~ \$25.00 per year. One address.
- Individual ~ \$20.00 per year.
- New * Renewal Dues are for Year _____ *

For new members who join in the last months of the year, membership will extend through the following year with no additional dues.

ANNUAL DUES – PLEASE PAY YOUR DUES PROMPTLY.

Pay at next meeting or mail to:

Mineralogical Society of DC
P.O. Box 9957
Alexandria, VA 22304
Name(s) (First and Last)

Address _____
City _____ State _____ Zip _____
Phone(s): Home/Work/Mobile _____
Email(s) _____

OK TO INCLUDE YOU ON CLUB MEMBERSHIP LIST? Distributed to Club members only.

Yes – Include name, address, phone, email.

If you want any information omitted from the membership list, please note:

Omit my: Email, Home phone, Work phone, Mobile phone, Address, Name

SPECIAL CLUB-RELATED INTERESTS?

MINERALOGICAL SOCIETY OF THE DISTRICT OF COLUMBIA

(2013 Officers & Board Members)

- President: Steve Johnson, stevikj@gmail.com
- Vice President & Program Chair: Rick Reiber, Mathfun34@yahoo.com
- Secretary: Patricia Flavin, pattiflavin@gmail.com
- Treasurer: Rebecca Siegal, dcminalclub@gmail.com, (mail: c/o MSDC, P.O. Box 9957, Alexandria, VA 22304)
- Director: Dave Nanney
- Director: Dave Hennessey
- Director: Andy Thompson, thompson01@starpower.net
- Editor: Sheryl Sims, sesims4@cox.net
- Co-Web Master: Betty Thompson & Casper Voogt, <http://mineralogicalsocietyofdc.org/>

Meeting Dates, Time, and Location: The first Wednesday of each month. (No meeting in July and August.) The National Museum of Natural History, Smithsonian Institution, 10th Street and Constitution Ave, Washington D.C. We will gather at the Constitution Avenue entrance at 7:45 PM to meet our guard who will escort us to the Cathy Kirby Room. Street parking: **THERE ARE NOW PARKING FEES, PAYABLE AT THE KIOSKS, AND ENFORCEMENT UNTIL 10 PM.**

MINERAL MINUTES



Newsletter of the Mineralogical Society of the District of Columbia

Mineralogical Society of DC
P.O. Box 9957
Alexandria, VA 22304
U.S.A.



Time Sensitive Dated Material
First-Class Mail

September 2013