

Mineralogical Society of the District of Columbia



MINERAL MINUTES

The Mineral Minutes is the bulletin of The Mineralogical Society of the District of Columbia, Inc.

The purpose of this Society is to promote interest in mineralogy, geology, and related earth sciences and to encourage mineral collecting. An annual scholarship is awarded to a deserving student in the related field.

The Mineralogical Society of the District of Columbia is one of the founding Societies of the Eastern Federation of Mineralogical and Lapidary Societies.

Vol. 71, No. 8-A

Founded 1942

SPECIAL EDITION - SEPTEMBER 2012

EFMLS ANNUAL MEETING

September 14-16, 2012

By Sheryl E. Sims

(Photos unless otherwise indicated, by S. Sims)



The Eastern Federation of Mineralogical and Lapidary Societies ("EFMLS") held its 47th Annual Mineral and Jewelry Show, and EFMLS convention on September 14-16, 2012, in Harrisburg, PA (Radisson Penn Harris Hotel, Camp Hill, PA). Hosted by the Central Pennsylvania Rock and Mineral Club, Inc., (David Brandon, President), clubs from all over the eastern federation gathered for a most enjoyable long-weekend.



Those wanting to participate set up their displays on Friday at the Zembo Shrine. In the meantime, others boarded a chartered bus and headed to Elizabethtown, College, Elizabethtown, PA. Members had been invited to attend the Frank Masters' reception, hosted by the college. Mr. Masters generously donated a world-class mineral collection to the geology department. As the president of a small, beautiful, college, the president and staff were ecstatic to be the recipients of such a remarkable gift.

October 2012

\\DC - 700504/000630 - 3495708 v1

MINERAL MINUTES



Frank Masters, Donor

EFMLS President R.J. Harris addressed the group as did Mr. Masters. Viewing the collection was one of the highlights of the trip.

Afterwards, attendees headed back to the hotel to prepare for the EFMLS Annual meeting. During the meeting, various committee chairs gave their reports and high praise was given for participating in Wildacres workshops. The new EFMLS board was elected.



The evening proved to be the perfect time to meet and greet people that most only know from reading the EFMLS newsletter or by visiting the EFMLS website.

As pointed out by AFMS 2nd VP, Matt Charsky, the east coast mineral clubs are a part of a much larger group. We are under the umbrella of the eastern federation. The American Federation of Mineralogical Societies is comprised of seven organizations:

CFMS - California Federation of Mineralogical Societies
EFMLS - Eastern Federation of Mineralogical and Lapidary Societies
MWF - Midwest Federation of Mineralogical and

Geological Societies

NFMS - Northwest Federation of Mineralogical Societies
RMFMS - Rocky Mountain Federation of Mineralogical Societies
SCFMS - South Central Federation of Mineral Societies
SFMS - Southeast Federation of Mineralogical Societies

It's important for clubs to support the EFMLS, which supports the AFMS. Money we contribute to the various funds goes to support programs and provide scholarships to students studying/working in the field of geology. All of these points were highlighted during the annual meeting.

Following the meeting, we gathered in EFMLS President, R.J. Harris' suite for refreshments and a relaxing time to socialize with other EFMLS members. We had a great time!

On Saturday, Sept. 15, final exhibit preparations took place at the Zembo Shrine, followed by a wonderful mineral show and EFMLS Endowment Fund auction. This year's show theme was, "*Crystals: Flowers of the Mineral Kingdom*". Activities included the EFMLS Endowment Fund Auction, displays, rock wheel, silent auction, mini mine, Scouts, Jeri Jones Lectures, rocks, gems, fossils, and free posters.

Later that evening, we attended the EFMLS Awards Banquet. We participated in a social hour and enjoyed a delicious dinner of salmon, beef, chicken, and veggies. Some EFMLS club member winners who you may know are:

- **Barbara Sky:** won a trophy for her pyrite display. All specimens in her display were under one inch in size, which is the thumb nail category, <bskysky@aol.com>.
- **Bob Davidson:** won the EFMLS web site competition and ranked 6th for the AFMS Web Site Contest (SMRMC). EFMLS has 17 entries!
- **Cynthia Payne:** was named the MSDC Each One Teach One recipient.
- **Erich Grundel:** won ninth place for an original educational article and ninth place for a non-technical article.
- **Joe Murter:** was named one of the *AFMS Club Rockhounds of the Year* for the Eastern Federation (by the NVMC).
- **Kathy Hrechka:** won honorable mention, along with her children, Julia and Michael for their article in *The Mineral Mite*. Kathy also won an honorable mention certificate for her Fred Schaefermeyer article.
- **Mary Bateman:** received a certificate of appreciation for serving as a BEAC judge.

MINERAL MINUTES

- **Matt Charsky:** received a certificate of appreciation for serving as a BEAC judge.
- **Patrick Haynes:** won first place for an original education article.
- **Sheryl Sims:** won a silver medal in the *AFMS All American Club Award* – “Year Book” competition (NVMC); second and seventh place for original educational articles in the EFMLS bulletin contest; and eighth place in the AFMS bulletin contest.

Awards were presented by Barbara Sky: Competitive Exhibits; Hazel Remaley, Each One Teach One; Reivan Zeleznik, AFMS Scholarship Award; Betsy Oberheim, All American Award; Ellery Borow, club Rockhound of the Year; Fran Sick; Easter Foundation Fund; R.J. Harris & David Brandon, CPRM Special Club Awards.

The guest speaker for the evening was Robert Beard, Senior Contributing Editor, “Rock & Gem” magazine.

Following the award ceremony and dinner, attendees retreated to their rooms to prepare for the Editors and Webmasters Breakfast on Sunday 16th. After a breakfast buffet, awards were presented.

Following the breakfast, some participants headed for a field trip to Mount Pleasant Mills Quarry in search of wavelite, calcite, fluorite, and gastropods. The field trip leader was R.J. Harris. Others returned for another fun day at the mineral show or prepared to return home.



(photo: Central PA Rock & Mineral Club Newsletter, Bev Eisenacher)

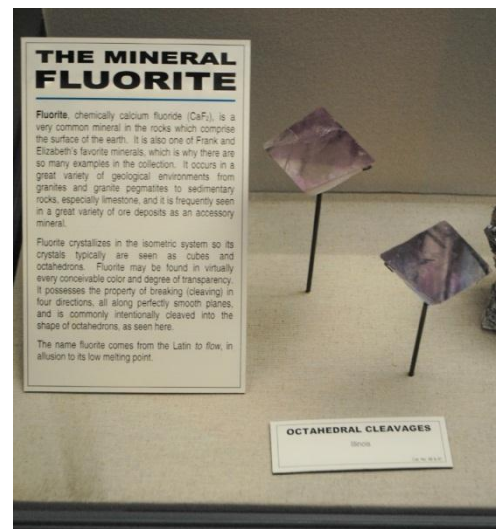


R.J. Harris, 2012 EFMLS President & Gerry Cox, EFMLS Secretary





Frank Masters and Elizabethtown College President, Carl J. Strikwerda, Ph.D.





PARALLEL GROWTH OF SKY BLUE CUBES
Blanchard mine, near Bingham, Socorro County, New Mexico
Cat. No. 128



FLUORAPOPHYLLITE WITH STILBITE
Small clusters of green mineral, associated with white stilbite
Luzon, Agupan District, Ilocos Norte, Philippines
Cat. No. 129

SCOLECITE
Exceptional specimen, one of most transparent varieties, a clear prisms from tapered corners
of the Jhansi Mines
Jhansi Village, Maharashtra, India
Cat. No. 130

GYPSUM, VAR. SAND GYPSUM
Specimens associated with the quartz in which they grow
Cedar Hill Planch, near Mt. Airy, Wilkes County, Oklahoma
Cat. No. 131

HEMATITE
Common, sometimes "lustrous ore"
West Carolina, England
Cat. No. 132

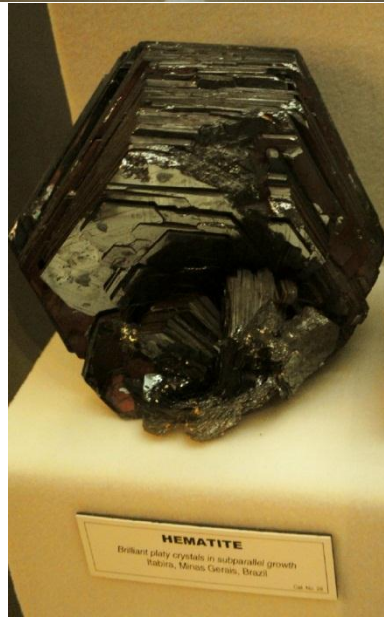
COPPER
Plate of advancement of the natural metal
Caledonia mine, Chiriquien County, Michigan
Cat. No. 133

LEPIDOLITE
Pearly lavender (lithium) member of the mica group
Tapajós, Minas Gerais, Brazil
Cat. No. 134

UVITE
Very large transparent crystals
group associated
Korumbur, China
Cat. No. 135



CAVANSITE WITH STILBITE
Vibrant blue spherical clusters with pearly white stilbite
Wagholi quarry, Poona, India
Cat. No. 402



HEMATITE
Brilliant platy crystals in subparallel growth
Itaboraí, Minas Gerais, Brazil
Cat. No. 28





QUARTZ, VARIETY AGATE
Colored banded agate slice polished
Minas Gerais, Brazil

QUARTZ, VAR. BRUNEAU JASPER
Mysterious unexplained elliptical globular patterns
Bruneau Canyon, Owyhee County, Idaho



QUARTZ, VARIETY SMOKY
Heavily colored by titanium
in aqueous solution

**QUARTZ, VARIETIES
AMETHYST AND CITRINE**
Heated to transform amethyst
into citrine

AMETHYST
Natural colored specimen
Rio Grande in S.D., Brazil

QUARTZ, VARIETY CITRINE
Artificially colored by heating amethyst
Austria, Uruguay



**QUARTZ WITH PYRITE
AND GOETHITE**
Iron-stained quartz crystal group with pyrite
crystals and brown goethite.
China

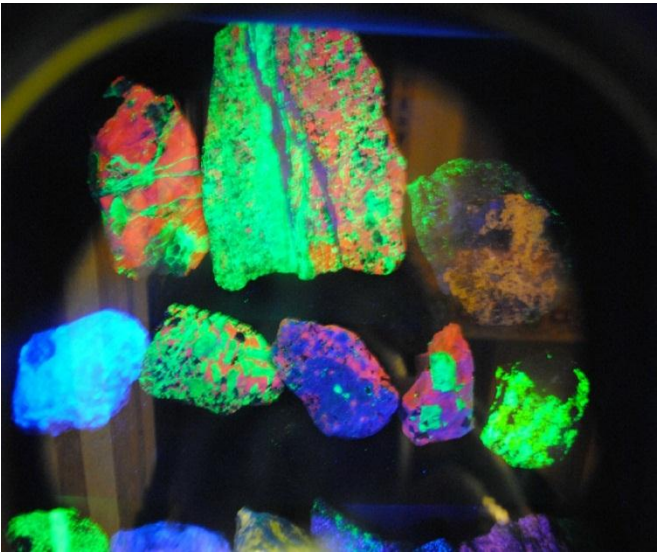
SOME MINERALS FROM PENNSYLVANIA

Pennsylvania has been and still is a very rich state in terms of mineral specimen production. Most of these have been by-products of mines and quarries operated for ore, construction rock or limestone for agricultural purposes. By far the vast majority of the more interesting minerals have come from the central and southeastern parts of the state. Seen here are some very good examples of what the state has produced. The coal mines that are so extensive in the northeastern and southwestern parts of the state are relatively barren in terms of producing interesting minerals. Many, however, are well-known for the fern fossils that are found in them.





Ann & Don Monroe, AFMS President



MINERAL MINUTES



MINERAL MINUTES



Betsy Oberheim, All American Awards – Year Book, Chair & Awards Banquet



S.C.R.I.B.E. Editor, Dan Imel



Ann Benson & Lorraine Campbell from Delaware Valley Earth Science Society (New Jersey club)

MINERAL MINUTES



David Brandon,
Central PA Club President and his club generously provided free posters for all take and share with clubs and schools! (Photo from Central PA Rock & Mineral Club Newsletter, 9-18-12.)



EFMLS Bulletin Editors Breakfast



Left: 2012-2013 EFMLS President, Don Monroe and his wife, Ann.



Bev Eisenacher, BEAC Awards Chair & Carolyn Weinberger, EFMLS Editor

Current EFMLS Officers and Committees

President, R. J. Harris
 1st Vice President, Cheryl Neary
 2nd Vice President, Hazel Remaley
 Secretary, Gerry Cox
 Treasurer, Lou Budell
 Asst. Treasurer, Michael Patterson
 Editor, Carolyn Weinberger

REGIONAL VICE PRESIDENTS

Region I, Kathleen Collins
 Region II, Michael Kessler
 Region III, Hazel Remaley
 Region IV, Carl Miller
 Region V, Judy Budnik
 Region VI, Barbara Fenstermacher
 Region VII, Kim Cochran
 Region VIII, Michelle Renné

EFMLS COMMITTEE CHAIRPERSONS

AFMS Endowment Fund*, Carolyn Weinberger
 AFMS Scholarship Foundation*, RJ Harris

MINERAL MINUTES

AFMS Ways & Means*, to be appointed
All American Award*, Betsy Oberheim
Auction, to be appointed
Audit, Donald Pitkin
Boundaries, Carl Miller
Budget & Finance, Cheryl Neary
Bulletin Editors Advisory*, RJ Harris
Bylaws, Steve Weinberger
Club Rockhound of the Year*, Ellery Borow
Conservation & Legislation, to be appointed
Convention Advisory, Matt Charsky
Directory, Carolyn Weinberger
Each One Teach One, Hazel Remaley
Eastern Foundation Fund, Fran Sick
Historian, Susanna MacInnis
Insurance Coordinator, Carl Miller
Junior Activities*, Rev. Darryl Powell
Operating Procedures, Steve Weinberger

Parliamentarian, Steve Weinberger
Safety*, Ellery Borow
Show Coordinator, Matt Charsky
Slide & Video Librarian*, Ken Tudor
Supplies, Suzy Milligan
Uniform Rules, Barbara Sky
Ways & Means, to be appointed
Webmaster, Dan Imel
Wildacres Workshop Committee, Steve Weinberger, Chair
Mary Bateman, Gerry Cox, Al DeMilo, Jim Doran, Bruce
Gaber, and Valerie Johnson
Director, Fran Sick
Registrar, Pamm Bryant

Nominating (Elected Committee)
Matt Charsky, Chair; Jim Doran, Carl Miller, Betsy Oberheim,
Wayne Sukow, Loren Patterson, and Reivan Zeleznik

AFMS Officers for 2012-13

President - Don Monroe (SFMS) President-elect - Richard Jaeger (RMFMS)
1st Regional Vice President – Marion Roberts (CFMS)
2nd Regional Vice President – Matt Charsky (EFMLS)
3rd Regional Vice President – Ann James (SCFMS)
4th Regional Vice President – Sandy Fuller (MWF)
5th Regional Vice President – Doug True (NFMS)
Treasurer – Pat LaRue (2 year term)

The position of Secretary was not up for election this year. Anne Cook will complete the 2nd year of her 2 year term.

Celebrate
Earth Science Week
October 14-20, 2012
October 13-19, 2013
www.earthsciweek.org



MINERAL MINUTES

Pre-Meeting Dinner: Join us for dinner at the Pier 7 Restaurant at 6:00 PM for dinner before the club meeting.
650 Water St SW, (at S L St), Washington, DC 20024, (202) 554-2500, www.pier7restaurant.com/Menu.
Please call Susan Fisher at 703-830-9733 to make a reservation if you wish to attend.

Visitors are always welcome at our monthly meetings and dinners!
MEMBERSHIP APPLICATION OR RENEWAL
THE MINERALOGICAL SOCIETY OF THE DISTRICT OF COLUMBIA (MSDC)

- Family ~ \$25.00 per year. One address.
- Individual ~ \$20.00 per year.
- New * Renewal Dues are for Year _____*

For new members who join in the last months of the year, membership will extend through the following year with no additional dues.

ANNUAL DUES – PLEASE PAY BY JANUARY 10.

Pay at December or January meeting or mail to:

Mineralogical Society of DC
P.O. Box 9957
Alexandria, VA 22304
Name(s) (First and Last)

Address _____
City _____ State _____ Zip _____
Phone(s): Home/Work/Mobile _____
Email(s) _____

OK TO INCLUDE YOU ON CLUB MEMBERSHIP LIST? Distributed to Club members only.

- Yes – Include name, address, phone, email.
- If you want any information omitted from the membership list, please note:
Omit my: Email, Home phone, Work phone, Mobile phone,
 Address, Name

SPECIAL CLUB-RELATED INTERESTS? _____

MINERALOGICAL SOCIETY OF THE DISTRICT OF COLUMBIA

President: Tom Tucker, threedogtom@earthlink.net
Vice President & Program Chair: Andy Thompson, thompson01@starpower.net
Secretary: Patricia Rehill, patriciarehill@gmail.com
Treasurer: Rick Reiber, Mathfun34@yahoo.com, (mail: c/o MSDC, P.O. Box 9957, Alexandria, VA 22304)
Director: Cynthia Payne
Director: Dave Nanney
Director: Dave Hennessey
Editor: Sheryl Sims, sesims4@cox.net
Co-Web Master: Casper Voogt & Betty Thompson, www.mineralsocietyofDC.org

Meeting Dates, Time, and Location: The first Wednesday of each month. (No meeting in July and August.) The National Museum of Natural History, Smithsonian Institution, 10th Street and Constitution Ave, Washington D.C. We will gather at the Constitution Avenue entrance at 7:45 PM to meet our guard who will escort us to the Cathy Kirby Room. If you park on the street, **THERE ARE NOW PARKING FEES, PAYABLE AT THE KIOSKS, AND ENFORCEMENT UNTIL 10 PM.**

MINERAL MINUTES



Newsletter of the Mineralogical Society of the District of Columbia

Mineralogical Society of DC
P.O. Box 9957
Alexandria, VA 22304
U.S.A.



Time Sensitive Dated Material
First-Class Mail